

**ANDERSON®
SEPARATOR**



**National
Filtration
Systems®**



Replacement Filter Elements

Filter Elements

Mem-Pure Series



Absolute Rated Performance From PFTE Membrane Filter Cartridges

Mem-Pure PFTE membrane filter media provides a high flow and maximum efficiency filter element. The Mem-Pure Series filter cartridges offer non-fiber releasing membrane and superior low extractable levels. Materials of construction are FDA listed as acceptable for potable and edible contact.

Hi-Pure Series



Absolute Rated High Efficiency From All-Polypropylene Pleated Cartridges

Hi-Pure Series cartridges, made from pleated polypropylene microfiber, provide high efficiency and high purity filtration. The high submicron efficiency to the Hi-Pure line makes it an ideal membrane prefilter or cost-effective alternative to membrane cartridges in a wide variety of applications.

Cel-Sure Series



Unique Cartridge Construction Improves Particle Retention, Service Life and Flow Rates

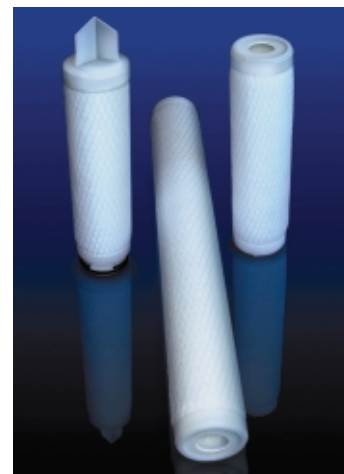
Cel-Sure Resin Impregnated Cellulose cartridges meet a broad range of critical filtration applications. Each cartridge is made from premium grade phenolic impregnated cellulose media. This structure provides superior particle removal and particle retention performance under severe conditions.

Filter Elements

Mega-MB Series

Fixed Pore Structure Depth Cartridges With Absolute Rated Filtration Efficiency

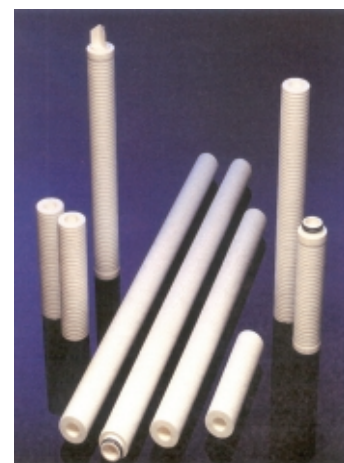
Mega-MB Series are absolute rated depth cartridges. The Mega-MB has higher dirt holding capacities for long service life and no contaminant migration. The Mega-MB has a fixed core inner structure of thermally bonded continuous microfine polypropylene fibers with the outer layer being modified to maximize graded density to enhance dirt holding capacity.



Dura-MB Series

Quality Filtration With High Strength Thermally Bonded Depth Cartridges

Dura-MB cartridges feature an integral rigid thermally bonded construction with consistent filtration for a wide variety of fluids. The fixed pore structure has a sieve particle classification filter for pigmented coatings allowing pigments to pass while stopping large agglomerates.



Econo-MB Series

High Purity Filtration With Low Cost Melt Blown Depth Cartridges

Econo-MB cartridges are the most economical high purity elements available. Featuring a graded density matrix of uniform polypropylene fibers, the Econo-MB provides consistent filtration for a wide variety of filters. No fiber finish or surfactants are present to generate extractables leading to foaming or other undesirable effects on the filtrate.



Filter Elements

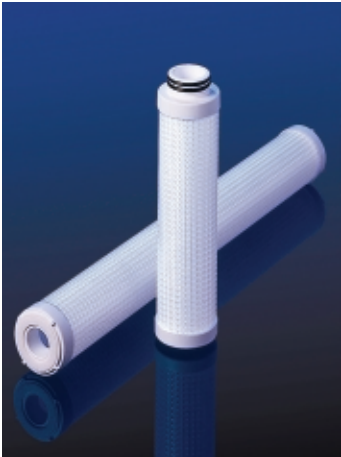
Resin-Sure Series



High Strength Resin Bonded Cartridge Design Offers Superior Performance

Resin-Sure cartridges have a unique two-stage filtration design to maximize particle removal and service life. An outer spiral pre-filter wrap increases cartridge strength and eliminates residual debris associated with conventional machined resin bonded cartridges.

Hydra-Sorb Series



Hydrocarbon Removal With Enhanced Polymeric Absorbent Filter Cartridges

Hydra-Sorb absorbent cartridges utilize a modified polymeric absorbent that economically and effectively reduces trace hydrocarbon contamination in aqueous fluids. The enhanced polymer, configured in a radial-flow design element, provides maximum utilization of available surface area. Whether reclaiming process fluid or meeting disposal requirements, Hydra-Sorb can solve many demanding hydrocarbon contaminated aqueous fluid problems.

Quality-Pure Series



Absolute, Economical Filtration With Pleated Microfiberglass Cartridges

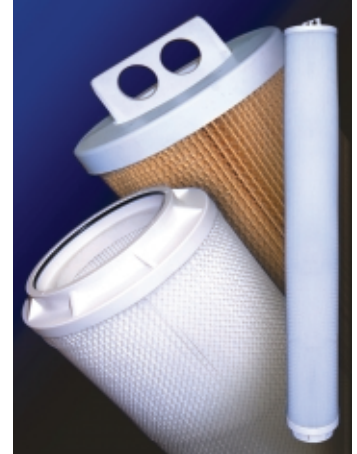
Quality-Pure elements offer an economical choice for absolute rated efficiency, high flow rate and long service life. A wide variety of construction components, end fittings and seal options make this product line ideal for pre-filtration and point of use filtration for many industrial applications.

Filter Elements

SuperFlow+ Series

High Flow Capacity, Absolute Rated Coreless Pleated Filter Cartridges

SuperFlow+ Series elements are ideally suited for high flow applications where absolute particle removal is required. Each SuperFlow+ cartridge can handle flow rates up to 250 GPM (950 LPM). Each 6" (152 mm) diameter cartridge has the flow capacity equal to 10 standard 2.5" OD x 40" L elements. Positive O-ring seals and a built-in handle make cartridge installation reliable, fast and easy.



CW Filter-Sure Series

Versatile Filtration Performance in a Quality Continuous Wound Filter Element

CW Filter-Sure continuous wound elements provide high-quality, low-cost, effective depth filtration for your process requirements. Our continuous winding process provides uniform filter cartridges, which provide long service life, low pressure drop and high solids holding capacity.



Rolled Depth Filter Series

Rolled Depth Filters Have Excellent Temperature and Fluid Compatibility

Rolled Depth elements are applied in numerous gas processing, refining and petrochemical applications. The elements are manufactured under strict process guidelines, which ensure even flow characteristics and uniform micron ratings through the entire length of the element.



Filter Elements

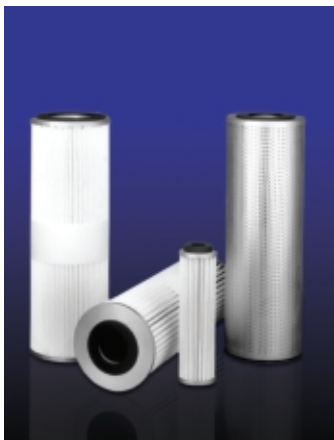
Flow-Sure Series



Superior Industrial Filtration From a Pleated Cartridge Design

Flow-Sure elements are the perfect choice for many industrial applications. Flow-Sure pleated cartridges contain premium grade, phenolic impregnated cellulose media. The Flow-Sure Series is designed for critical applications providing long service life, high flow rates and low pressure drop.

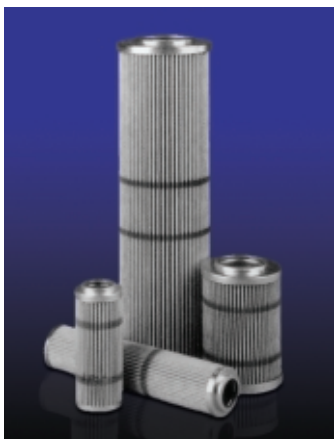
Flow-Sure+ Series



Rugged High Performance Design in an Industrial Pleated Synthetic Element

Flow-Sure+ elements are designed for maximum performance in a wide range of oil, water and chemical fluid applications. The advanced media backed by a support screen allows the cartridge to resist deterioration and softening caused by long-term exposure in oil, water-based and chemical fluids.

Hi-Flow Series



Absolute Rated, High Flow Design in an Industrial Pleated Microglass Element

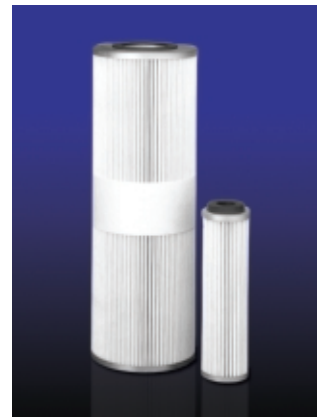
The Hi-Flow Series elements provide maximum filtration performance in a wide variety of oil, water-based and chemical fluid applications. The advanced supported microglass media provides absolute rated (ISO16889) filtration for critical lube oil and hydraulic oil systems. Absolute performance for the most critical applications.

Filter Elements

Water-Sorb Series

Water Removal From Oil in Critical Filtration Applications

Water-Sorb Series elements are designed to provide free water absorbing capabilities. The dual purpose multi-layer design includes a super absorbent matrix polymer that provides unequalled performance in removing water and shows an increase in differential pressure to signal change-out. Water-Sorb elements are recommended for critical applications such as: electrical insulating oil, hydraulic oils and distillate fuels.



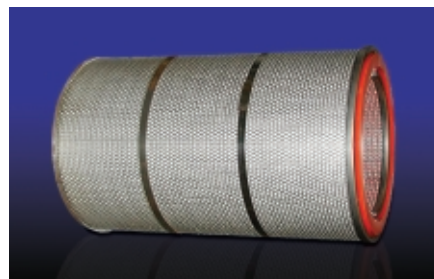
Hi-eF™ Coalescer Series

High Efficiency Gas/Liquid Coalescer

Combines the properties of both Depth and Pleated coalescers by providing multi-layer pre-coalescing and filtration and multi-layer post coalescing and draining with the high surface area properties of Pleated Coalescers.

The pre-filtration coalescing and filtration layers assure long coalescing life by keeping the particulate off of the fine filtration/coalescing layers while the post coalescing/draining layers assure that all small coalesced droplets are drained quickly.

Efficiency ratings and sizes available for use in Clark-Reliance or other vessels.



Metallic Filter Series

Optimum Filtration Solution for Fluids and Gases in High Temperature and High Flow Rate Applications

Stainless steel elements provide the optimum filtration solution for fluids and gases in high temperature and high flow rate applications. Available in a cylindrical or pleated design, cleanable stainless steel cartridges are the logical choice when natural and synthetic media cartridges cannot meet aggressive process conditions.



Filter Elements

NATIONAL DISTRIBUTOR

Authorized National Distributor for Complete Line of Mahle Industrial Filters

The Clark-Reliance Filtration Group supplies a broad range of customers with the Mahle filter line. Quality constructed original equipment filters and components delivered from stock.



Liquid Filter Vessels



Versatile Designs to Meet a Wide Variety of Applications

- ASME Code & Non-Code Available
- Carbon & Stainless Steel
- Simplex & Duplex Designs
- Custom Designs Available
- Non-Stock Vessels are Quick Delivery



Wide Variety of Filter Element Designs and Efficiencies



Authorised Distributor:



**NATIONWIDE
OIL & GAS**

46, Jalan SS 22/21, Damansara Jaya,
47400 Petaling Jaya, Selangor Darul Ehsan, Malaysia.

Email: nog@nog.com.my

Web access: <http://www.nog.com.my>