

Bleeding and venting valves

Bleeding and venting valves EB 6.32



Bleeding and venting valve for operating pressures up to 63 bar

Technical Data

Connection DN	15 - 50
Connection G	1/2 - 2
Nominal pressure PN	63
Operating pressure	0 - 63 bar
Flow rate	up to 36 Nm ³ /h
Temperature	200 °C
Medium	liquids from a density of 468 kg/m ³

Description

Bleeding and venting valves remove air or gases from systems or pipelines without requiring an external energy input. When a system is drained they act as venting valves; venting may be prevented by fitting a non-return valve.

EB 6.32 are float-controlled, compact and lightweight bleeding and venting valves for particular applications and special media. Thanks to its fully developed lever mechanism, the valve is suitable for media from a density of 468 kg/m³. They are manufactured from stainless steel featuring excellent corrosion resistance. The valve cone can be fitted with a soft or metallic seal.

The simple design makes it easy to specify, install, handle and service these valves in an industrial environment.

Valves for continuous bleeding must not be overdimensioned. If a larger valve size is selected, a higher working pressure range with a correspondingly lower flow volume should be chosen. In case of doubt we shall be happy to advise you.

On filter vessels the bleed connection is often located in the middle of the vessel. If the flow volume is large and the distance between distribution funnel and bleed connection small, the incoming water jet hits the bleed connection. This will impair the efficiency of the bleed valve and can result in water hammer. This problem may be avoided by installing a baffle or by placing the bleed connection away from the centre.

Standard

- » All stainless steel construction
- » Cone with soft seal
- » Version suitable for temperatures up to 200°C

Options

- » Ozone-resistant design
- » Various seal materials suitable for your medium
- » Plastic coating for corrosive fluids
- » Non-return valve to prevent venting
- » Special connections: Aseptic, ANSI or DIN flanges, welding spigots; other connections on request
- » Special versions on request

Operating instructions, know how and safety instructions must be observed. The pressure has always been indicated as overpressure. We reserve the right to alter technical specifications without notice.



ill. similar

Pressure Ranges [bar]

0 - 25	0 - 32	0 - 40	0 - 63
--------	--------	--------	--------

other pressure ranges on request

Bleeding and venting valves

Bleeding and venting valves EB 6.32

Bleeding and venting valve for operating pressures up to 63 bar



Materials

Body	CrNiMo-steel
Internals	CrNiMo-steel
Schwimmer	CrNiMo-steel
Valve Seal	EPDM / FPM or metallic
Body Seal	EPDM

Dimensions[mm]

size	nominal diameter		
	G 1/2 x 1/2A	G 3/4 x 1/2A	G 1 x 3/4A
B*	40	40	40
C*	186	196	194
D	170	170	170

Weights [kg]

nominal diameter			
	G 1/2 x 1/2A	G 3/4 x 1/2A	G 1 x 3/4A
	3.4	3.5	3.6

Dimensions [mm]

size	nominal diameter		
	DN 15	DN 20	DN 25
B*	40	40	40
C*	242	240	227
D	170	170	170

Weights [kg]

nominal diameter			
	DN 15	DN 20	DN 25
	4.7	5	5.5

Customs Tariff Number

84818059

* Overall length tolerances in acc. with DIN EN 558

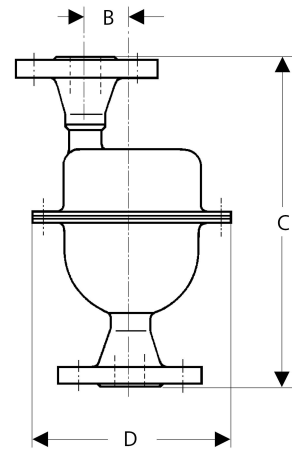
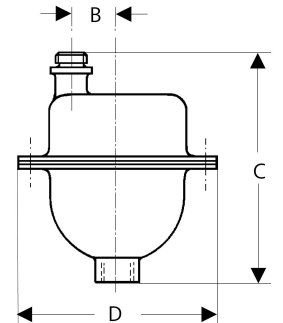
** PN 63 on request

Special designs on request.

The pressure has always been indicated as overpressure.

Mankenberg reserves the right to alter or improve the designs or specifications of the products described herein without notice.

Dimensional Drawing



Authorised Distributor:



46, Jalan SS 22/21, Damansara Jaya,
47400 Petaling Jaya,
Selangor Darul Ehsan, Malaysia.

Email: nog@nog.com.my

Webste: www.nog.com.my