

# Steam Traps

## Steam Traps KA 2

Universal Valve for Small Flow Rates



### Technical Data

Connection G	3/4 x 1/2A
Nominal Pressure PN	16
Operating Pressure	0 - 12 bar
Flow Rate	350 l/h
Temperature	190 °C
Medium	steam

### Description

Steam traps automatically drain condensate without loss of steam or gas. They operate instantaneously and are not affected by backpressure or pressure fluctuations. They do not require an external energy input.

KA 2 is a float-controlled steam trap for all applications and especially suitable for corrosive condensate and applications in the food industry. It is entirely manufactured from stainless steel featuring excellent corrosion resistance. The valve is fitted with a soft seal.

Top and bottom sections of the valve body are connected by a clamp ring and two bolts. Servicing/maintenance is easy and does not call for special tooling.

The simple design makes it easy to specify, install, handle and service these valves in an industrial environment.

### Standard

- » All stainless steel construction
- » Quick-release body clamp ring
- » Manual bleed valve

### Options

- » Various seal materials suitable for your medium
- » Expansion pipe connection in the valve top section for draining condensate from compressed air or gases
- » No manual bleed valve
- » Special versions on request

Please state working pressure range when enquiring or ordering.

Operating instructions and safety instructions must be observed. All the pressure has always been indicated as overpressure. We reserve the right to alter technical specifications without notice.



### Pressure Ranges [bar]

0 - 2	0 - 6	0 - 12
-------	-------	--------

### Flow Rate [l/h]\*

$\Delta p$ bar	pressure range bar		
	0 - 2	0 - 6	0 - 12
0.1	70	19	6
0.2	100	28	9
0.5	160	40	12
1	230	70	18
2	350	110	27
4	-	160	46
6	-	200	50
8	-	-	60
10	-	-	70
12	-	-	75

\*Cold condensate (20°C)

# Steam Traps

## Steam Traps KA 2

Universal Valve for Small Flow Rates



### Materials

Body	CrNiMo-steel
Body Seal	FEPM
Seat	CrNiMo-steel
Float	CrNiMo-steel
Valve Seal	FFKM

### Dimensions [mm] and Weights [kg]

size	inlet female G 3/4 outlet male G 1/2A	weight kg
A*	27	0.85
B*	135	
D	140	

\* Overall length tolerances in acc. with DIN EN 558

### Customs Tariff Number

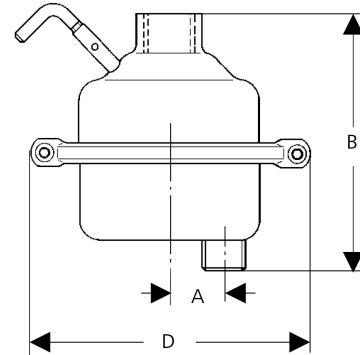
84818059

Special designs on request.

The pressure has always been indicated as overpressure.

Mankenberg reserves the right to alter or improve the designs or specifications of the products described herein without notice.

### Dimensional Drawing



### Authorised Distributor:



**NATIONWIDE  
OIL & GAS**

46, Jalan SS 22/21, Damansara Jaya,  
47400 Petaling Jaya,  
Selangor Darul Ehsan, Malaysia.

Email: [nog@nog.com.my](mailto:nog@nog.com.my)

Website: [www.nog.com.my](http://www.nog.com.my)