

PENBERTHY MAGNETIC LIQUID LEVEL GAUGES MODELS PMG / PMGV

Penberthy Magnetic Level Gauges products offer a superior solution to liquid level monitoring and a viable alternative to glass level gauges, float switches, displacers and other mechanical and electronic level technologies



FEATURES

- Wide Indicator with 1.5" (38.10mm)
- Unique dual ring magnet float design custom weighted per application
- Chamber designed to ASME B31.3 with B31.1 designs available
- Easy installation and virtually maintenance free
- Optional switches and transmitters
- Model MGVB (vapor-bypass) provides superior solution for flashing applications

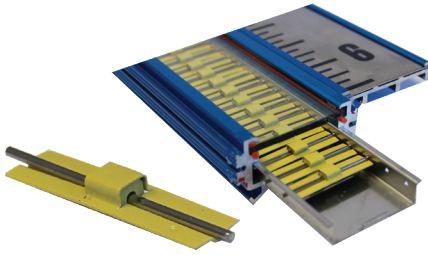
GENERAL APPLICATION

The Penberthy Magnetic Level Gauge product line offers an extensive range of models and accessories to meet the needs of both simple and stringent level measurement applications in petrochemical processing, refining, compressors, water treatment, storage tanks and oil water separators.

TECHNICAL DATA

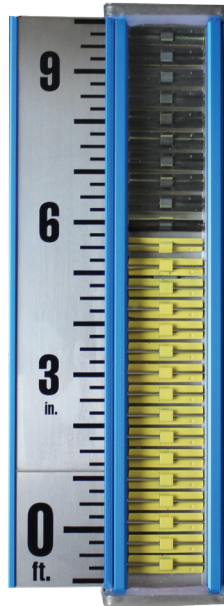
Materials:	304/304L, 316/316L, Alloy20, Hastelloy C276, Monel 400, Titanium, and More! (See Model Code for details)
Pressures:	Up to 3500 psi (241 BarG)
Floats:	Down to .36 S.G
Temperature Range:	-325 F to 1000 F
Lengths:	Up to 225"

PENBERTHY MAGNETIC LIQUID LEVEL GAUGES INDICATOR DESIGN



PENBERTHY FLAG INDICATORS

Experience precision and durability with the Penberthy Magnetic Level Gauge Indicator construction. Built with a sturdy aluminum extrusion and a 316SS flag track, it combines strength and corrosion resistance for long-lasting performance. Each flag contains an integral magnet and offers dual rotation points for smooth, reliable operation. Featuring high-temperature Yellow/Black or Red/White finishes, the indicator ensures excellent visibility in challenging conditions. With options for hermetically sealed polycarbonate or glass enclosures and customizable scales (Ft/In, M/mm), it's designed to meet diverse industrial needs. Upgrade to unmatched reliability and versatility with our premium level gauge indicator.



WIDE FLAG

- Industry leading 1.5" (38.10 mm) width
- Stainles Steel precision stamped
- Integral Magnet in each flat
- Dual rotation points



Say goodbye to missed flags! Reliable level readings without the risk of decoupling between the float and indicator.

HERMETICALLY SEALED OPTIONS AVAILABLE

Ideal for Offshore, Corrosive Vapors, Cryogenic and other severe environments

- Polycarbonate tubing with epoxy sealed end plugs to 500F (260C) process temperature
- Glass tubing with 100% fused glass end seals to 1000F (538C) process temperatures



PENBERTHY®

PENBERTHY MAGNETIC LIQUID LEVEL GAUGES MODEL PMG

FOLLOWER-TYPE INDICATION

The standard magnetic level gauge model features a 2.5" Schedule 40 pipe, incorporating a unique dual magnet ring float design. These floats are individually rated to suit specific applications, with their lengths adjustable based on process conditions and specific gravity. To accommodate diverse operational needs, a variety of float materials are available. For light-duty applications, the PMG-15B model offers a streamlined solution, utilizing a 1.5" Schedule 10 chamber for efficient performance. These magnetic level gauges are designed to handle interface applications effectively. With dual floats, one monitors the total level while the other monitors the interface. For optimal performance, a minimum specific gravity difference of 0.1 is required between the monitored substances. Ideal for use in storage and pressure vessel applications, these gauges perform reliably even in extreme-duty conditions. Models are also available in Kynar and CPVC, offering corrosion resistance for low-pressure applications.

Engineered for versatility and durability, these magnetic level gauges provide an excellent solution for a wide range of industrial environments. Contact us to explore how they can meet your specific needs.

FEATURES AND BENEFITS

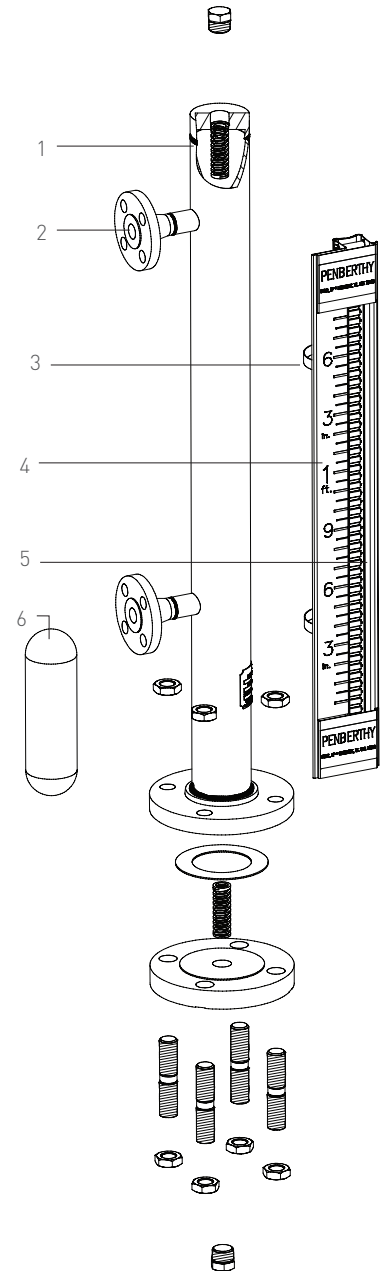
- **Connection versatility** - A wide variety of connections are available: weld neck flanges, lapjoint flanges, weldolets, threadolets, sockolets, NPT threads and other plumbing options. Butt weld tee's allow for full penetration welding on the side process connections.
- **Process compatibility** - A wide variety of material or lining options to meet most process applications.
- **Code design** - Construction in accordance with B31.3 with optional models available for B31.1 and PED compliance.
- **Remote control and indication** - Switch and transmitter options are available to be externally mounted on the standpipe.

Construction materials

304 / 304L SS
316 / 316L SS
Alloy-20 Cb3
Hastelloy® C 276
Monel®
PVC
CPVC
PVDF
PFA Teflon lined
Halar® lined

Illustration key

1 Standpipe
2 Vessel connection
3 Clamp
4 Indicator scale
5 Follower or flag indicator
6 Magnetic float



PENBERTHY®

PENBERTHY MAGNETIC LIQUID LEVEL GAUGES MODEL PMGV

PMGV (VAPOR BYPASS) MODEL

The Penberthy Vapor Bypass is an innovation in magnetic level gauge design and addresses processes where flashing may occur, which can cause many other magnetic gauges to fail. When flashing occurs, the vapor build-up beneath the float cannot escape quickly enough due to the limited clearance between the float and the chamber wall. This causes the float to rocket to the top of the chamber where it is crushed or damaged. The Penberthy Vapor Bypass features a larger 3" Schedule 40 pipe with two internal guide rods which allows entrained gases beneath the float to escape harmlessly, preventing potential interference. The float is positioned to one side of the chamber to maintain an optimized magnetic field, ensuring precise interaction with the indicator, transmitter, or switches. This design guarantees accurate float positioning and reliable indicator reading.

FEATURES

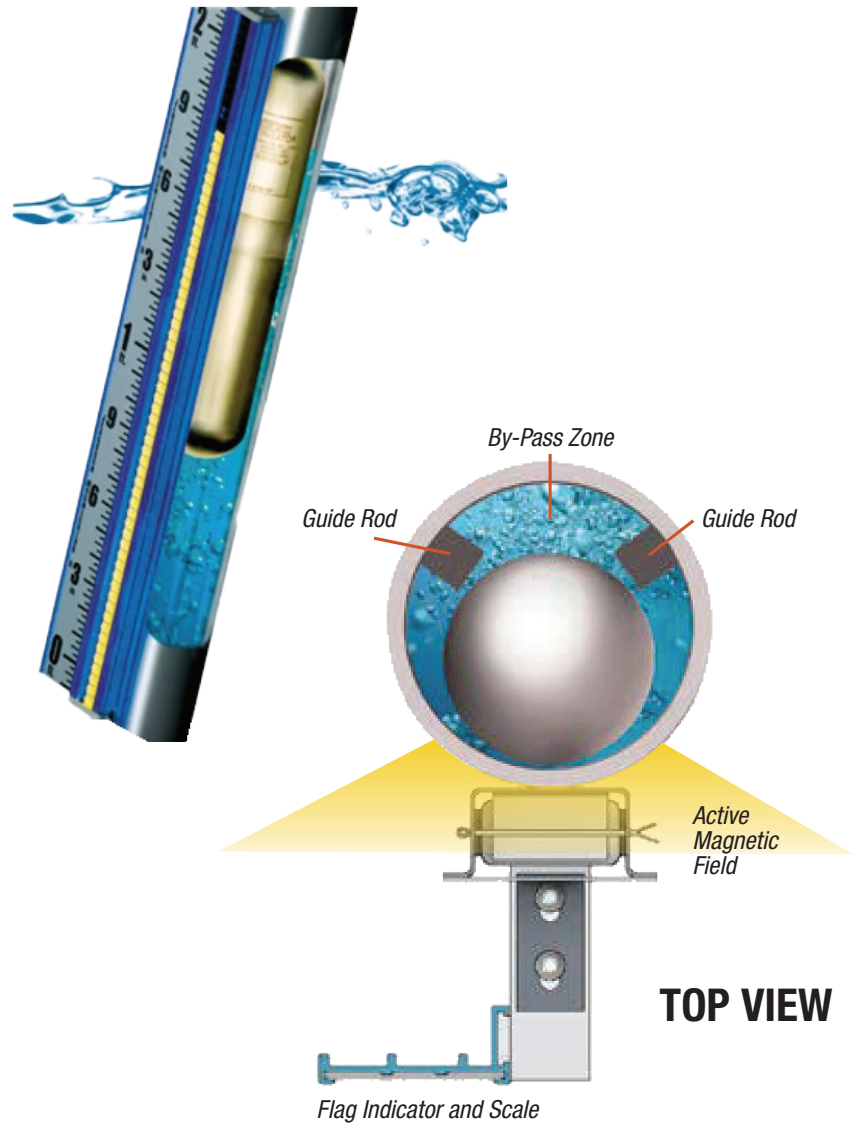
- Larger chamber and unique internal float cage
- Magnetically interlocked flag-type indication
- Custom-weighted magnetic float
- Designed in accordance with ASME B31.3
- Easy installation
- Virtually maintenance-free
- Optional transmitter or switches

TYPICAL APPLICATIONS

- Light hydrocarbons
- Liquid nitrogen
- Propane
- Methane
- Carbon dioxide
- Anhydrous ammonia (or any pressure-liquified gas)

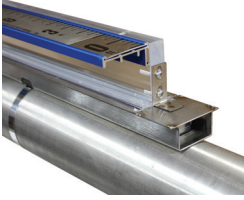
TECHNICAL DATA

Standpipe material:	NPS 3" Schedule 40 pipe
Minimum specific gravity:	0.36
Pressure rating:	Up to ASME Class 900
Temperature range:	-325°F to 1000°F (-198°C to 537°C)



PENBERTHY®

PENBERTHY MAGNETIC LIQUID LEVEL GAUGES ACCESSORIES



NON-FROST EXTENSION

- 2-1/2" acrylic (standard)
- Available on Wide Indicator
- Custom sizes available

COMBINATION SIGHT GLASS / MAGNETIC LEVEL INDICATOR

- Use glass level gage for calibration and level verification only
- Maintenance is virtually eliminated
- Available as an upgrade for sight glass installations
- Not for use in ASME Section I Installations



HOT OR COLD INSULATION

Hot Insulation To 500°F (260°C)

Jacket covers entire gage and includes drawcords at each end for closure. Provided with openings for gage process connections, indicator and switches or transmitters.

- PTFE coated & impregnated fiberglass
- 1" thickness to 500°F (260°C)
- Stainless steel grommets
- Polypropylene / fiberglass drawcord at ends
- Contact factory for higher temperatures



ELECTRIC HEAT TRACE

- Class II Standard
- Optional Class I, Div. 1
- Thermostat available
- Two (2) passes standard installation



STEAM HEAT TRACE

- 3/8" compression fitting both ends
- Four (4) passes standard installation



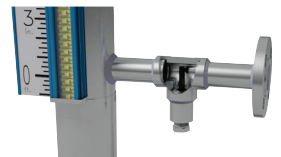
CRYOGENIC INSULATION 32°F (0°C) TO -250°F (-156°C)

- Polyisocyanurate foam insulation - 2" thick
- .016" aluminum jacketing with moisture barrier
- All joints sealed
- Optional non-frost extension required



MAGNETIC PARTICLE TRAP

- Prevent build-up of ferritic material around float magnets
- SW Tee (std.) in lower process connection with 1/2" NPT plug and magnet
- Plug/Magnet removable when isolated for cleaning, replacement



PENBERTHY®

PENBERTHY MAGNETIC LIQUID LEVEL GAUGES

DEFINE CHAMBER & MATERIALS



See Page 7
Define Vent/
Drain and
Process
Connections

See Page 8
Define
Process
Conditions /
Indicator
and Scale

See Page 9 Options

CHAMBER DESIGN

Code	Description
PMG	Standard, ASME B31.3 Design
PMGV	Vapor Bypass, ASME B31.3 Design

Shading indicates standard offering.
Standard products are the most economical
and have the fastest deliveries.

CHAMBER DESIGN

SIZE			
Code	Description	Valid w/Chamber Design	
15	1.50" NPS	PMG	
20	2.0" NPS	PMG	
25	2.5" NPS	PMG	
30	3.0" NPS	PMG	PMG

SCHEDULE

Code	Description	Valid w/ Chamber Design/Size	
B	Sched. 10	PMG - 15, 20 ¹ , or 25 ¹	
C	Sched. 40	PMG - 20, 25, or 30	PMG-30
D	Sched. 80	PMG - 25 or 30	PMG-30
E	Sched. 160	PMG - 30	

FLANGE CLASS

Code	Description	Code	Description
01	150# ASME	D10 ²	DIN PN 10
03	300# ASME	D16 ²	DIN PN 16
06	600# ASME	D25 ²	DIN PN 25

Code	Description	Code	Description
09	900# ASME	D40 ²	DIN PN 40
15	1500# ASME	D64 ²	DIN PN 64
25	2500# ASME	D100 ²	DIN PN 100

MATERIAL(S) OF CONSTRUCTION (Standpipe Material/Trim Material³)

Code	Description	Code	Description
R ^{4,5}	304/304L Stainless Steel	MD13 ⁷	Incoloy® 800
R ^{4,5}	304/Carbon Steel ³	MD14 ⁷	Inconel® 625
T	316/316L Stainless Steel	MD15 ⁷	Incoloy® 825
TA	316/Carbon Steel ³	XL4 ⁷	SMO 254, UNS 31254
K ⁷	Alloy 20	ZZ ⁷	Zirconium ZR2
LC ⁷	Hastelloy® C276	PFR ⁸	PFA Teflon® Coated 304/304L SS
N ⁷	Monel® 400	PFT ⁸	PFA Teflon® Coated 316/316L SS
S ⁷	347 Stainless Steel	PVR ⁸	PVDF® Coated 304/304L SS
Y ⁷	321 Stainless Steel	PVT ⁸	PVDF® Coated 316/316L SS
V ⁷	317 Stainless Steel	HLR ⁸	HALAR® Coated 304/304L SS
TT ⁷	Titanium	HLT ⁸	HALAR® Coated 316/316L SS
LB3 ⁷	Hastelloy® B3	CP ^{8,9}	CPVC Construction (Includes Float)
MD4 ⁷	Inconel® 600	PV ^{8,10}	PVDF® Construction (Includes Float)

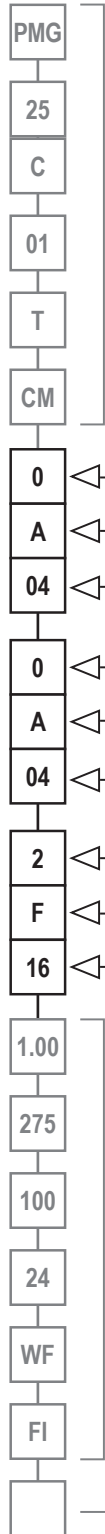
CHAMBER STYLE¹¹ (See Page 10 for Illustrations)

Code	Top End of Chamber	Bottom End of Chamber
CM	Welded Cap	Flange with Mating Flange
MC	Flange with Mating Flange	Welded Cap
MM	Flange with Mating Flange	Flange with Mating Flange
MF	Flange with Mating Flange	Flange
FM	Flange	Flange with Mating Flange
CF	Welded Cap	Flange
FC	Flange	Welded Cap
FF	Flange	Flange
CT ¹²	Welded Cap	Welded Cap w/ Thread (Chamber Access)
TC ¹²	Welded Cap w/ Thread (Chamber Access)	Welded Cap
TT ¹²	Welded Cap w/ Thread (Chamber Access)	Welded Cap w/ Thread (Chamber Access)
B0 ^{7,13}	Top Mount (BEF) without Stilling Well or Guide Pipe (If Inserted Into Existing Pipe or Stilling Well)	
B1 ^{7,13}	Top Mount (BEF) with Guide Pipe (Insertion Lengths Up To 24" (610mm), or Stilling Well Fit Issues)	
B2 ^{7,13}	Top Mount (BEF) with Open-Ended Stilling Well (Insertion Lengths 24" (610mm) & Over)	
B3 ^{7,13}	Top Mount (BEF) with Capped Stilling Well (Insertion Lengths 24" (610mm) & Over)	

PENBERTHY®

PENBERTHY MAGNETIC LIQUID LEVEL GAUGES

DEFINE VENT/DRAIN & PROCESS CONNECTIONS



See Page 6
Define
Chamber &
Materials

See Page 8
Define
Process
Conditions /
Indicator
and Scale

See Page 9 Options

VENT/TOP CHAMBER CONNECTION ^{16,17} (See Page 11 for Illustration)

VALVE		STYLE ²¹		SIZE	
Code	Description	Code	Description	Code	Description
0	None	A	FNPT (Female NPT)	04	1/2" (DN 15)
1	Gate	B	FSW (Female Socket Weld)	06	3/4" (DN 20)
2	Globe	C	MNPT (Male NPT)	08	1" (DN 25)
S	Spl/Custom Specified	D	MSW (Male Socket Weld)	12	1-1/2" (DN 40)
		F ¹¹	Flange	16	2" (DN 50)
		K	None	20	2-1/2" (DN 65)
				24	3" (DN 80)
				00	N/A

DRAIN/BOTTOM CHAMBER CONNECTION ^{18,19} (See Page 11 for Illustration)

VALVE		STYLE ²¹		SIZE	
Code	Description	Code	Description	Code	Description
0	None	A	FNPT (Female NPT)	04	1/2" (DN 15)
1	Gate	B	FSW (Female Socket Weld)	06	3/4" (DN 20)
2	Globe	C	MNPT (Male NPT)	08	1" (DN 25)
S	Spl/Custom Specified	D	MSW (Male Socket Weld)	12	1-1/2" (DN 40)
		F ¹¹	Flange	16	2" (DN 50)
		K	None	20	2-1/2" (DN 65)
				24	3" (DN 80)
				32	4" (DN 100)
				00	N/A

SIDE PROCESS CONNECTION(S)

NO. OF SIDE CONNECTIONS		STYLE ²¹		SIZE	
Code	Description	Code	Description	Code	Description
0	No Side Connections	A	FNPT (Female NPT)	04	1/2" (DN 15)
1T	1 @ Top Side Only	B	FSW (Female Socket Weld)	06	3/4" (DN 20)
1B	1 @ Bottom Side Only	C	MNPT (Male NPT)	08	1" (DN 25)
2	2 Side Connections	D	MSW (Male Socket Weld)	12	1-1/2" (DN 40)
# ²²	3+ Side Connections (#, Specify Qty)	E	Butt-Weld	16	2" (DN 50)
		F ¹¹	Flange	24	3" (DN 80)
		K	None	00	N/A

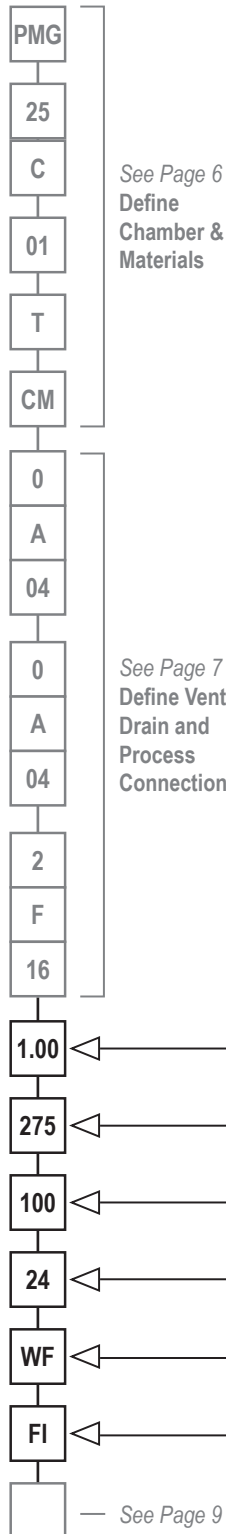
Notes:

- Coated chamber materials only.
- Applicable only to flanged, customer facing connection(s); process, vent, drain.
- 'Trim' is any chamber component(s) above/below the standpipe, & any process flange(s).
- Chamber cap is 316/316L SS.
- Guide bars (when Vapor Bypass) are 316/316L SS.
- Consult factory for chamber size & schedule code.
- Coated, CPVC or PVDF chamber materials not available w/ Vapor Bypass design.
- Model PMG-25C-01 only.
- Model PMG-20C-01 only.
- Metallic (& when available, Coated) Mat's: Raised-face flange std. Slip-On 150#-600#. Weld Neck 900# & up. Plastic: Socket-weld flange std. Std faces raised and/or flat (uncontrolled, at vendors' discretion).
- Only available with Nominal Chamber Size '15'.
- Requires completed BEF specification form, prior to quoting.
- Valve & Style selections shall be '0F', for Chamber Style 'F(M, C, or F)'.²⁰
- Nominal Chamber Size '15', requires Valve, Style, & Size selections to be '0A16', for Chamber Style 'T(C or T)'.¹⁹
- Valve & Style selections shall be '0F', for Chamber Style '(M, C, or F)' or '(0,1, or 2)'.²⁰
- Nominal Chamber Size '15', requires Valve, Style, & Size selections to be '0A16', for Chamber Style '(C or T)'.¹⁹
- Flange Size shall be greater than or equal to Nominal Chamber Size.
- For coated chambers, all connections flanged.
- Specify elevation(s) of intermediate nozzle(s).
- Contact factory for additional application guidance.
- (a) A multiple section chamber may be required when range/center exceeds mat// application limits: ~225" metallic & CPVC, ~175" PVDF, ~100" coated. Each joint shall be flanged, have a break in the measuring range, include support/lifting brackets on either side. Consult factory for continuous chamber options.
- (b) For CPVC & PVDF gages, support brackets, option BR#, recommended every ~84" (2134mm).
- (c) For gages w/ 1+ end process connection(s), consult factory for resulting visible range, or process connection dimension.
- Additional air purge kit (1/8" FNPT connection) available, up to 600°F (315°C) max. NEMA 4X rating no longer applicable.
- Two scales on indicator, along either side (left/right) of flags. Not available on NightStar indicators.
- Not all options are available w/ every combination. Unless already identified, consult factory for applicability.
- May result in 1" increase/decrease in chamber float leg/ visible range, respectively.
- Not applicable w/ CPVC or PVDF.
- Located in-line w/ upper-side branch conn. (when present, otherwise 180° from indicator), unless otherwise noted.
- Raw mat' of all wetted piping components from USA, Canada, Japan, or W. Europe (as defined by Penberthy)
- Standard dimensions listed. Subject to change based on actual design.
- Meets B31.3 & NACE, w/ or w/o Insulation.
- Suitable only for 150#/300# flanged joints, w/o a spiral wound gasket.
- Indicator location (in degrees) clockwise from top-side process, viewed from above the gage. N/A for 180° (std) or zero side connections.

PENBERTHY®

PENBERTHY MAGNETIC LIQUID LEVEL GAUGES

DEFINE CHAMBER & MATERIALS



SPECIFIC GRAVITY 0.30 & Up, Depending on Float Style & Max Operating Conditions. For varying SG applications, specify min SG in the range. For interface applications, specify "Upper Fluid"/"Lower Fluid" (0.1 Min Differential Req'd).

MAXIMUM OPERATING PRESSURE (PSIG) Up to 3500 psig (241 bar); Consult factory for greater values.

MAXIMUM OPERATING TEMPERATURE (°F) Up to 1000°F (537°C) max.

VISIBLE RANGE / CENTER-CENTER or FACE-FACE or CENTER-FACE²⁵
 Enter (1) value if visible range & center-to-center are equal. Exact inches (for mm, add "mm").

FLAG STYLE INDICATOR

Yellow (Liquid)/Black (Vapor) Colors Standard. See Options for Red/White Order Code. Consult Factory for Other Color Options.

Code	Description
WF	Wide Indicator (1-1/2" Flag), Sealed (NEMA 4X) in Anodized Aluminum Housing, 1000°F (537°C) Max
HWFP	Wide Indicator (1-1/2" Flag), Hermetically Sealed (IP68) in Polycarbonate Tube, Stainless Steel Frame, 500°F (260°C) Max
FL	Conventional Indicator (3/4" Flag), Sealed (NEMA 4X) in Anodized Aluminum Housing, 1000°F (537°C) Max
HFLP	Conventional Indicator (3/4" Flag), Hermetically Sealed (IP68) in Polycarbonate Tube, Stainless Steel Frame, 500°F (260°C) Max
HFLG	Conventional Indicator (3/4" Flag), Hermetically Sealed (IP68) in Glass Tube, Stainless Steel Frame, 1000°F (537°C) Max (Sealed Glass Tube Sections Stacked End to End w/ ~1.5" (38mm) Gap, when Visible Exceeds 78" (1981mm))
NI	No Indicator

SCALE TYPE

Code	Description
FI	Feet/Inches
MM	Meter/Millimeter
PS	Percent Scale
SS	Special Scale
NS	No Scale
—/—	Dual Scale ²⁷ Format, Specify Types (Example: FI/MM)

PENBERTHY®

PENBERTHY MAGNETIC LIQUID LEVEL GAUGES

DEFINE OPTIONS

PMG
 25
 C
 01
 T
 CM
 0
 A
 04
 0
 A
 04
 2
 F
 16
 1.00
 275
 100
 24
 WF
 FI
 □

See Page 6
Define
Chamber &
Materials

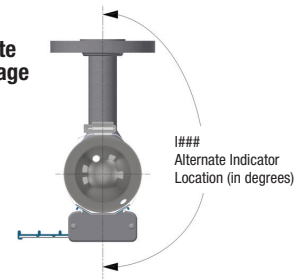
See Page 7
Define Vent/
Drain and
Process
Connections

See Page 8
Define
Process
Conditions /
Indicator
and Scale

OPTIONS²⁸ To define multiple options, add additional codes as suffixes to model string.

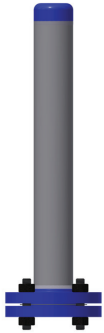
Code	Description
RW	Red (Liquid) /White (Vapor) Flag Indicator Colors (Std is Yellow/Black)
SF²⁹	Sunken Float Indicator (1" Below Measuring Range, w/ Alternate Flag Color Indication)
DI²⁴	Dual Indication, Total Level & Interface (WF Series or Hermetic Indicators Only. Both SG's Req'd.)
SW³⁰	Socket-Weld Flanges (All Around, Up To & Including 600#, Consult Factory above 600#)
WN	Weld Neck Flanges (All Around, Up to & Including 600#. Std. above 600#)
BW	Butt Weld Construction (Includes Full Bore Butt Weld Tees @ Branch Connections, & WN Flanges)
BR³¹	Support Bracket(s) (# = No. of Brackets. Unless Otherwise Noted, Evenly Spaced Between Process Connections)
NF	Non-Frost Extension, 3-5/8" (92mm) Depth (Min. Temp. -300°F (-184°C))
CI	Cold Insulation, 2" (50mm) Nominal Rigid Foam w/ Alum Jacket, -297°F (-182°C) to 300°F (148°C). Non-Frost (NF) Ext Included.
ST	Steam Tracing, 3/8" (9.5mm) OD Tube with Compression Fitting
E11	Self-Regulating, 120VAC Electric Heat Trace, Cl.I, D1, Grps B,C,D. Consult Factory for Optional Thermostat.
E12	Self-Regulating, 120VAC Electric Heat Trace, Cl.I, D2, Grps B,C,D, NEMA 4X Enclosure. Consult Factory for Optional Thermostat.
HI	High Temperature Insulation, Flexible Jacket, 500°F (260°C)
HI8	High Temperature Insulation, Flexible Jacket, 800°F (426°C)
BC	Designed to ASME Section I Boiler Code, 900 PSIG Max. Oper. Press.
NC	NACE Compliant to MR0103/0175
RMW³²	Regionally Restricted Material
B1	Designed to ASME B31.1
GR	Flexible Graphite Gasket w/ 316 Stainless Steel Insert
SWG	Spiral Wound Gasket (Graphite Filler w/ Inner Ring & Windings To Match Chamber) (Std w/ 600# Class Flanges & Above)
RJ	Ring Joint Flanges (All Around)
MT	Magnetic Trap, In-Line w/ Bottom-Side Process Connection
SE³⁰	Stub End w/ Lap Joint (aka: 2-Piece) Process Flange (Up To & Including 600#)
SP#	Set Point Arrow(s) (# = No. of Arrows, Evenly Spaced Along Indicator, unless otherwise noted)
SJ³³	Steam Jacketed w/ 1/2" FNPT (Std) (Jacket Length = Process C/L minus 7" (178mm), Jacket C-C = Process C/L minus 12" (305mm))
SML	Seamless Pipe
S8	Schedule 80 Nipples/Fittings (Does not apply to 1) Chamber, 2) Flange Class 600# & up (Std))
S16	Schedule 160 Nipples/Fittings (Does not apply to Chamber)
B7M³⁴	Cr-Mo Bolting (ASME A193 Gr.B7M Studs & ASME A194 Gr.2HM Nuts)
B8M³⁵	316SS Bolting (ASME A193 Gr.B8M, Class 1 Studs & ASME A194 Gr.8MA Nuts)
I##³⁶	Alternate indicator location, other than std, 180° (i.e., I090 = 90°, I225 = 225°)
DIN	DIN Flanges (All Around)

PMG Alternate Indicator Image

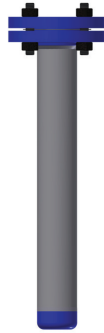


PENBERTHY®

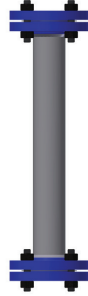
**PENBERTHY MAGNETIC LIQUID LEVEL GAUGES
CHAMBER STYLE ILLUSTRATIONS**



CM
Welded Cap Top,
Mating Flange Bottom



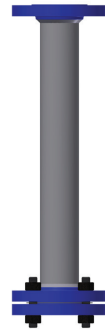
MC
Mating Flange Top,
Welded Cap Bottom



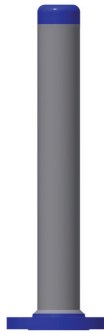
MM
Mating Flange Top,
Mating Flange Bottom



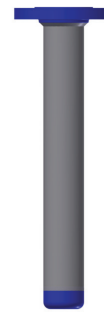
MF
Mating Flange Top,
Exposed Flange Bottom



FM
Exposed Flange Top,
Mating Flange Bottom



CF
Welded Cap Top,
Exposed Flange Bottom



FC
Exposed Flange Top,
Welded Cap Bottom



FF
Exposed Flange Top,
Exposed Flange Bottom



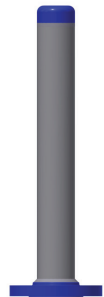
CT
Welded Cap Top,
Welded Cap with Thread
(Chamber Access) Bottom



TC
Welded Cap with Thread
(Chamber Access) Top,
Welded Cap Bottom



TT
Welded Cap with Thread
(Chamber Access) Top,
Welded Cap with Thread
(Chamber Access) Bottom



B0
Top Mount (BEF)
without Stilling Well
or Guide Pipe



B1
Top Mount (BEF)
with Guide Pipe



B2
Top Mount (BEF)
with Stilling Well,
Bottom End Open
(Open to Tank Floor)



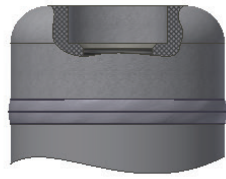
B3
Top Mount (BEF)
with Stilling Well,
Bottom End Capped
(Captured Float)



**PENBERTHY MAGNETIC LIQUID LEVEL GAUGES
VENT & DRAIN STYLES**



Cap FNPT



Cap FSW



Cap MNPT



Cap MSW



Cap Flanged



Cap Valve FNPT



Cap Valve FSW



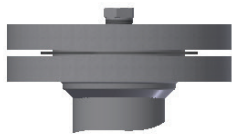
Cap Valve MNPT



Cap Valve MSW



Cap Valve Flanged



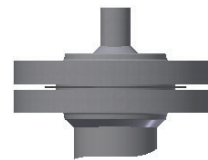
Flange FNPT



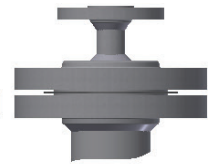
Flange FSW



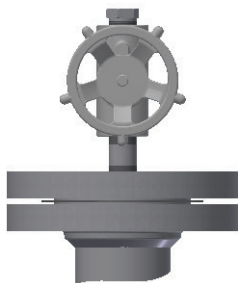
Flange MNPT



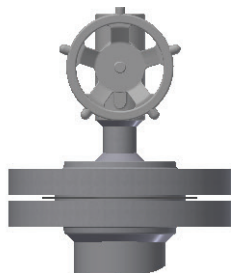
Flange MSW



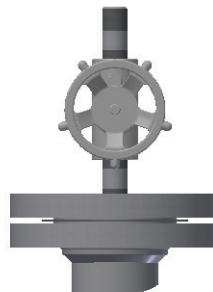
Flange Flanged



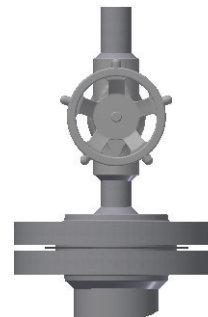
Flange Valve FNPT



Flange Valve FSW



Flange Valve
MNPT



Flange Valve
MSW



Flange Valve
Flanged



Authorised Distributor:



**NATIONWIDE
OIL & GAS**

46, Jalan SS 22/21, Damansara Jaya,
47400 Petaling Jaya,
Selangor Darul Ehsan, Malaysia.

Email: nog@nog.com.my

Website: www.nog.com.my

PENBERTHY®