

# SICON

Control and evaluation unit with touch screen and data logger



## Applications

- Control unit in combination with SIGRIST photometers

## Advantages

- Intuitive operability
- Touchscreen with colour display
- Optional display of measured values, graphics, status and alarm messages
- An internal data memory allows the display of measurement data over the last 32 days
- A password protects against unauthorised access
- Extensive communication options inclusive integrated web server

- Optional variant: SICON M enables the operation of several devices and up to eight measuring channels

## Industries

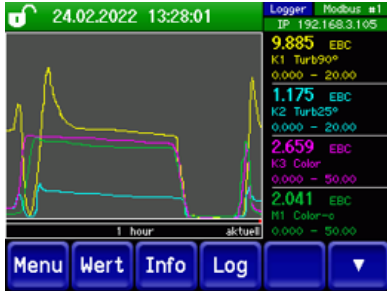
- Water
- Beverage and food industry
- Industrial Processes
- Traffic and environment

## Innovationen with true customer benefits



### Intuitive operability

- Control of the unit recalibration
- Warnings & error messages in text form
- Striking colour background for warning and error messages
- Callable memory for calibration procedures and error messages
- Up to four readings can be displayed simultaneously (maximum of eight readings via selection keys)



### SICON M multi control unit

The SICON M is externally identical to the SICON and offers the following additional options:

- Connect several devices
- Up to eight measuring channels can be operated via logical menu navigation

## SICON – versatile combinable

### Water

Drinking water treatment /  
Waste water treatment



AquaScat S



ColorPlus 2 System



ColorPlus 3



ColorPlus 2

### Beverages and food



TurBiScat



PhaseGuard



TurbiGuard

### Industrial processes



ColorPlus 2

### Traffic and environment



VisGuard 2



FireGuard 2

### Main technical details

Power supply:	9 .. 30 VDC
Power consumption:	5 W
Protection degree:	IP 66
Output analog:	4 x 0/4 .. 20 mA outputs, galvanically isolated up to max. 50 V to earth and max. 500 Ω load
Output digital:	7 x digital outputs up to max. 30 VDC, freely configurable, of which 1 output as relay normally closed
Fieldbus, integrated:	Modbus TCP / Ethernet
Fieldbus, optional:	Profibus DP, Modbus RTU, Profinet IO
SICON:	1 Sensor
SICON M:	2 Sensors, up to 8 Sensors with Conn-A
Input digital:	5 x digitale inputs up to max. 30 VDC, freely configurable

Full details and  
technical data:



# SICON

## Technical data

### System data

Power supply:	9 .. 30 VDC
Power consumption:	5 W
Weight:	Ca. 0.6 kg
Protection degree:	IP 66
Material housing:	ABS
Dimensions:	160 x 157 x 60 mm

### Display

Characteristics:	¼ VGA with touchscreen
Resolution:	320 x 240 pixels with 3.5" diagonal

### Output

Analogue:	4 x 0/4 .. 20 mA outputs, galvanically isolated up to max. 50 V to earth and max. 500 Ω load.
Digital:	7 x digital outputs up to max. 30 VDC, freely confi- gurable, of which 1 output as relay normally closed.
Optional:	With integrated 4-fold current output, four additional outputs (0/4 .. 20 mA, galvanically isolated up to max. 50 V to earth and max. 500 Ω load)
Fieldbus, integrated:	Modbus TCP / Ethernet
Fieldbus, optional:	Profibus DP, Modbus RTU, Profinet IO

### Input

SICON:	1 Sensor
SICON M:	2 Sensors, up to 8 Sensors with Conn-A
Digital:	5 x digital inputs up to max. 30 VDC, freely configurable
Optional:	4 x 0/4 .. 20 mA, isolated up to max. 50 V to earth and max. 500 Ω load

### Interface cards analogue / digital

Standard:	Ethernet, Modbus TCP, SD card (logging, SW update, diagnosis)
Optional:	Modules for Profibus DP, Modbus RTU, Profinet IO, and current output 4-fold, current input 4-fold